

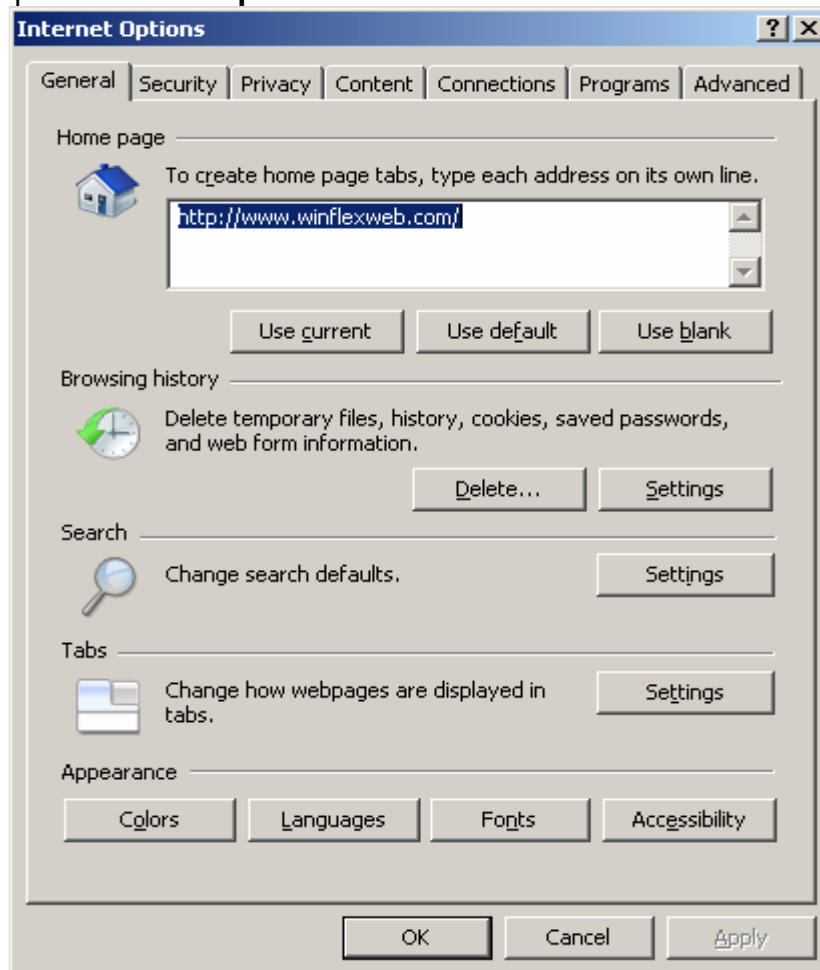
Setting the default 'Java (Sun) Runtime Environment'

Instructions for setting the default 'Java (Sun) Runtime Environment'

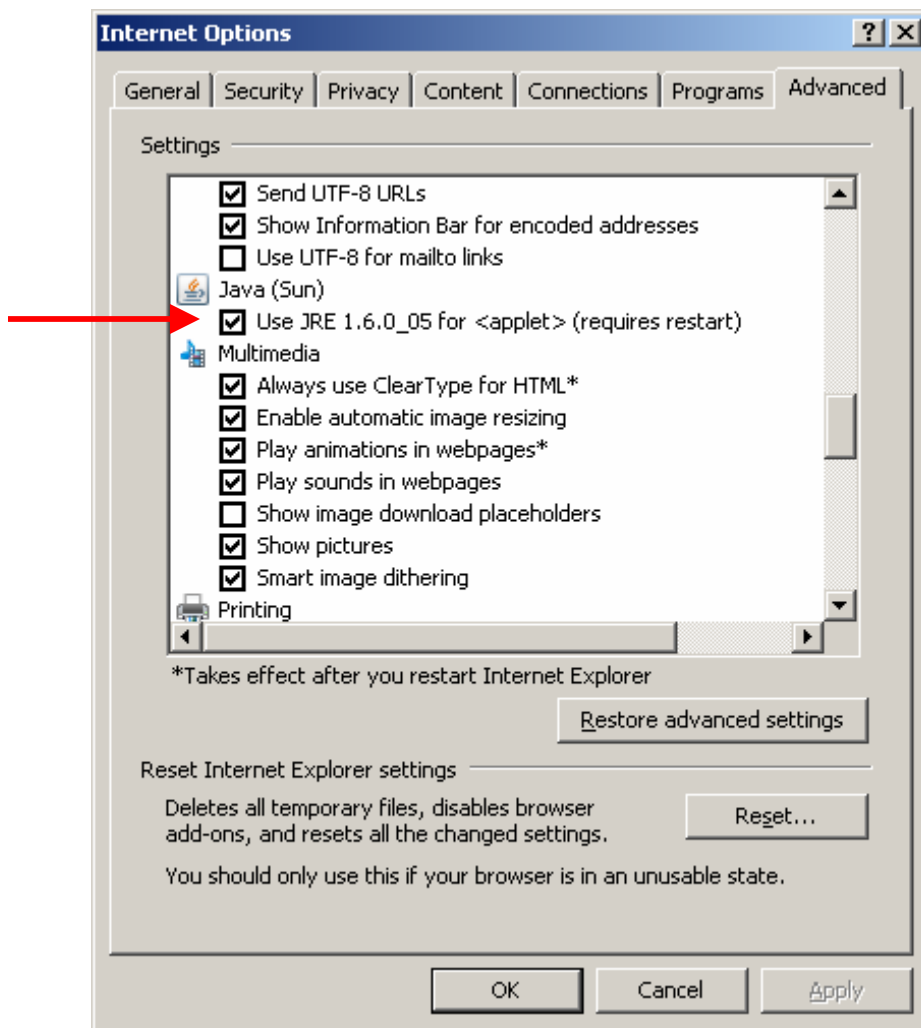
When Java plug-in 1.6.0 or greater is installed, it is set by default in the browser. Some Legacy applications may require earlier versions of the **Java Runtime Environment** and may be incompatible with this version of Java. In the event that other Java Applet applications perform inadequately after installation of this upgrade then remove this default setting. This document describes how to remove this setting.

Internet Explorer

- 1) Launch '**Internet Explorer**'
- 2) Open '**Internet Options**' under the Tools menu



- 3) Select the '**Advanced**' tab from the '**Internet Options**' window.
- 4) Scroll down until you locate '**Java (Sun)**'



- 5) **Uncheck** the box next to “**Use JRE 1.6.0_xx for <applet>**”
- 6) Click “**OK**” to save and close the dialog.
- 7) Close all Internet Explorer windows.